



InvenSense Inc.
3150A Coronado Drive, Santa Clara, CA 95054 U.S.A.
Tel: +1 (408) 988-7339 Fax: +1 (408) 988-8104
Website: www.invensense.com

DOC-00089-04
Release Date:06302006

IDG-300 Dual-Axis Gyroscope Evaluation Board Specification

This information furnished by InvenSense is believed to be accurate and reliable. However, no responsibility is assumed by InvenSense for its use, or for any infringements or patents or other rights of third parties that may result from its use. Specifications are subject to change without notice. Certain intellectual property owned by InvenSense and described in this document is patent protected. No license is granted by implication or otherwise under any patent or patent rights of InvenSense. This publication supersedes and replaces all information previously supplied. Trademarks that are registered trademarks are the property of their respective companies. InvenSense sensors should not be used or sold in the development, storing, production and utilization of any conventional or mass-destructive weapons or any other weapons or life threatening applications, as well as in any other life critical applications such as medical equipment, transportation, aerospace and nuclear instruments, undersea equipment, power plant equipment, disaster prevention and crime prevention equipment.

©2006 InvenSense, Inc. All rights reserved.

PROPRIETARY



InvenSense Inc.
3150A Coronado Drive, Santa Clara, CA 95054 U.S.A.
Tel: +1 (408) 988-7339 Fax: +1 (408) 988-8104
Website: www.invensense.com

DOC-00089-04
Release Date:06302006

1. Revision History

Revision Date	Revision	Description
March 27, 2006	1.0	Initial Release
May 5, 2006	2.0	Added EVB Picture & Orientation
June 6, 2006	3.0	Updated Schematic Labels
June 30, 2006	4.0	Added New Disclaimer



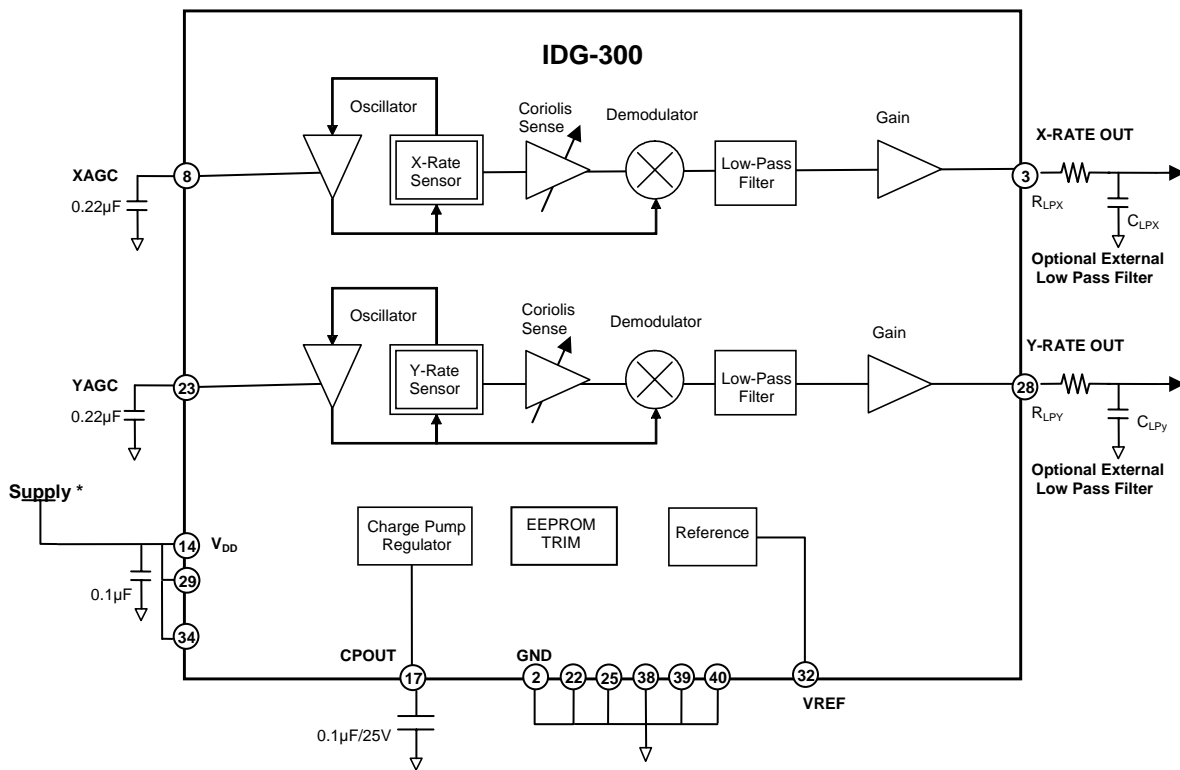
2. Purpose

This document provides the specification for the IDG-300 Dual-Axis Gyroscope Evaluation Board configured per the table below.

3. Evaluation Board Configuration

Sensitivity	Internal LPF	External LPF
2 mV/deg/sec	4.5° @ 10Hz	2kHz

4. Functional Block Diagram

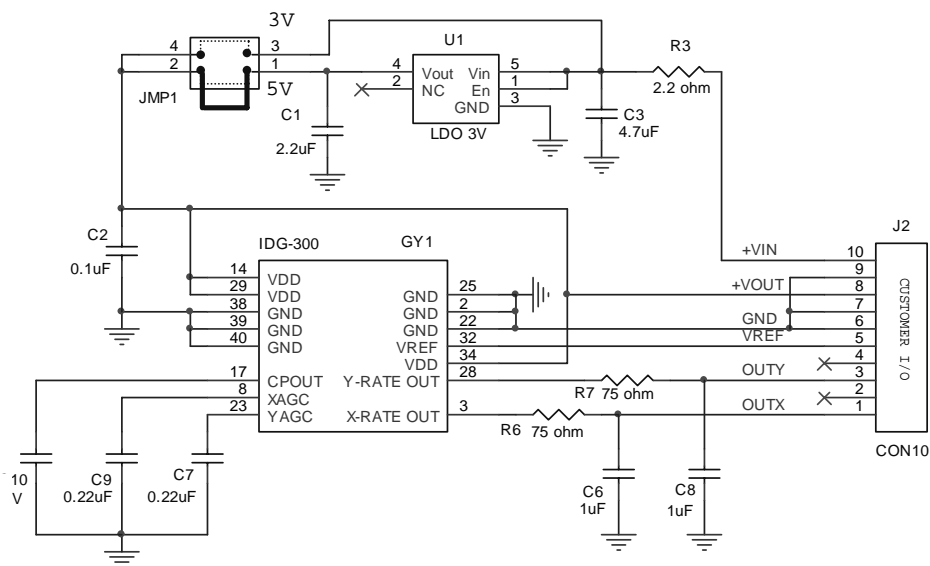


5. IDG-300 Evaluation Board Configuration

5.1 Schematic

The schematic below specifies the components on the IDG-300 Evaluation Board.

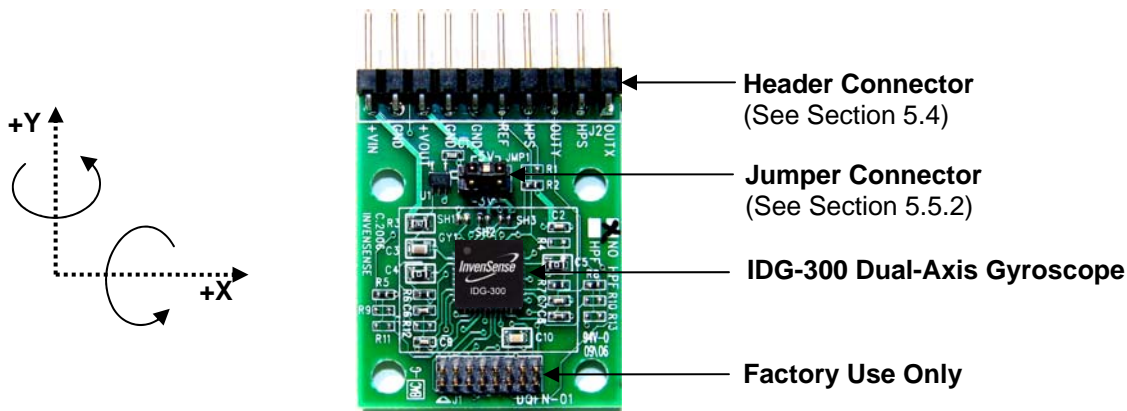
Figure 1



5.2 Bill of Materials

Item	Quantity	Reference	Part
1	1	C1	2.2uF 4.0V X5R 0402 ±20%
2	1	C2	0.1uF/10V X5R 0402 ±20%
3	1	C3	4.7uF/6.3V X5R 0603 ±20%
4	2	C4,C5	0 ohm/0603 jumper
5	2	C6,C8	1uF/6.3V X5R 0402 ±20%
6	2	C7,C9	0.22uF/6.3V X5R 0402 ±10%
7	1	C10	0.1uF/25V/X5R 0603 ±20%
8	1	GY1	IDG-300_D1_QFN40
9	1	JMP1	CON4A/0.050" X 0.1"
9B	1	JMP1	Shunt jumper
10	1	J1	CON16A/0.050 X2
11	1	J2	0.1" RA 10 PIN STRIP
12	3	R2,R5,R8	0 ohm/0402 jumper
13	1	R3	2.2 ohm/MF 5% 0603
14	2	R6,R7	75 ohm/MF 1% 0402
15	1	U1	Voltage Regulator 3.0V SC70

5.3 Evaluation Board Configuration



5.4 Signal Description

Pin	Signal	Description
1	OutX	Output of the X-axis gyro
2	HPS	Do not use
3	OutY	Output of the Y-axis gyro
4	HPS	Do not use
5	V _{REF}	1.2V reference voltage
6	GND	Ground
7	GND	Ground
8	+Vout	Return of the V _{DD} of the gyroscope chip
9	GND	Ground
10	+V _{IN}	Input power supply for the evaluation board (+5V / +3V)

5.5 Special Instructions

5.5.1 Electrostatic Discharge Sensitivity

The IDG-300 gyro can be permanently damaged by an electrostatic discharge. ESD precautions for handling and storage are recommended.

5.5.2 Jumper Connector

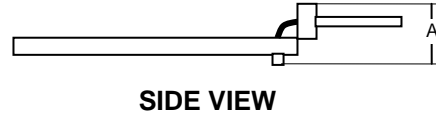
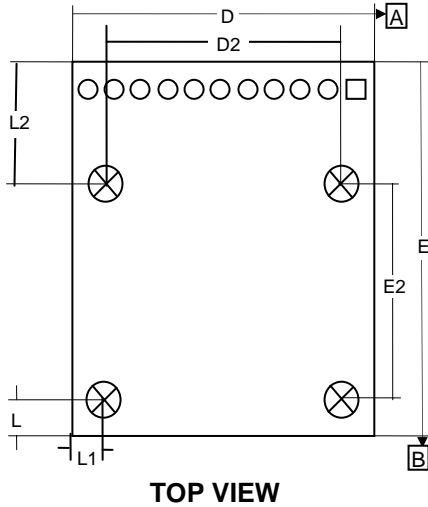
The IDG-300 evaluation board is equipped with a jumper connector to control the voltage supplied to the gyro. When the jumper is located in the “up” or standard position as shown in the picture above, the 5 Volts being supplied to the gyro is regulated to 3 Volts using an on-board regulator. When the jumper is located in the “down” position, the on-board regulator is bypassed and the gyro is being directly supplied with the voltage on Pin 10 (+V_{IN}).



InvenSense Inc.
3150A Coronado Drive, Santa Clara, CA 95054 U.S.A.
Tel: +1 (408) 988-7339 Fax: +1 (408) 988-8104
Website: www.invensense.com

DOC-00089-04
Release Date:06302006

6. Dimensional Drawing



Dimensions (mm)		
A	5.0	±1.0
D	25.7	±0.1
E	31.8	±0.1
L	3.1	±0.1
L1	3.1	±0.1
L2	10.2	±0.1
D2	19.5	±0.1
E2	18.5	±0.1